



Video Solutions for Security Professionals™

## CASE STUDY



### At a Glance:

**Market:**

Large Infrastructure

**Location:**

Ukiah, California

**Application:**

Upgraded from analog to IP, while using Ubiquiti Nanostation to help connect large surveillance system.

## Case Study: Storage Facility Upgrades to Wireless IP

### Introduction

The managers at C & M Mini Storage in Ukiah, California wanted to prevent the next break-in by upgrading their analog surveillance system. Thieves stole valuables out of the storage units and the current older analog system didn't deliver high quality images to identify the thieves. Managers demanded a reliable system of high-caliber that offered impeccable images, live view, and most importantly act as a deterrent before the next break-in. After experiencing analog, they decided along with their security professional to upgrade their system to IP.

marketing@LTSecurityinc.com | LTSecurityinc.com

*Disclaimer: The information contained in this case study is to be used only as a case study reference for learning material purposes. Optional formulated by author are intended to protect companies and its names and does not necessarily reflect the views of LTS. For more information on terms of use, please contact [marketing@LTSecurityinc.com](mailto:marketing@LTSecurityinc.com)*



Video Solutions for Security Professionals™

## CASE STUDY

### Featured Products:

(CMIP9142W) Platinum  
Fixed Lens Bullet Camera  
4.1MP – 4mm

(CMIP9142W-6) Platinum  
Fixed Lens Bullet Camera  
4.1MP – 6mm

(CMIP183) Platinum  
Discreet Pinhole IP Camera  
1.3MP

(CMIP3042W-28) Platinum  
Fixed Lens Turret IP  
Camera 4.1MP – 2.8mm

(LTN8716-P16) Platinum  
Professional Level 16  
Channel NVR, 1U

(POE-SW801) 8-Ports  
100Mbps Unmanaged PoE  
Switch

(LTUBNSM5) 5GHz  
Nanostation M5

(LTUBAMO-5G10) Ubiquiti  
Rocket M5

(DHWD60PURX) Western  
Digital Purple Surveillance  
Hard Drive – 6TB

### Challenge

Originally, C & M Mini Storage was 250 units, but recently they added another 500 new storage units to the property. Since it was a large area to cover, the main challenge for the security professional was connecting a surveillance system as Cat5E cable couldn't entirely be deployed from the far end of the lot to the main office building. He thought it was best to do a mix of cabling the nearest cameras and finding a wireless solution to secure coverage from the various locations throughout the premises.

### Solution

With the help of a trusted LTS product consultant, the security professional thought it was best to deploy cable to connect half of the project and go wireless the other half to fully surveil the property. Six Platinum Fixed Lens Bullet Cameras, CMIP9142W, were installed along the back wall of the property to secure units. An 8-port 100Mbps Unmanaged PoE Switch, POE-SW801, was used to power the cameras and help transmit surveillance data to a 5GHz Nanostation M5, LTUBNSM5, and send the video wirelessly to the front office where an Ubiquiti Rocket M5, LTUBAMO-5G10, receiver was connected to a Platinum Professional Level 16 Channel NVR, 1U, LTN8716-P16, to record the forensic evidence on one Western Digital 6TB Purple Surveillance Hard Drive, DHWD60PURX. Cable was used to connect the remaining CMIP9142W, but also one Platinum Fixed Bullet Camera 4.1MP -6mm, CMIP9142W-6, cameras on the units to secure each isle of units. Two Platinum Discreet Pinhole IP Cameras 1.3MP, CMIP183, were installed and positioned to capture who is the waiting area and behind the counter of the front desk for full surveillance and keep staff safe. A large monitor maintained the live view of all the cameras, making it easier for the management team to secure the property and deter the next act of theft from occurring.

marketing@LTSecurityinc.com | LTSecurityinc.com

*Disclaimer: The information contained in this case study is to be used only as a case study reference for learning material purposes. Optional formulated by author are intended to protect companies and its names and does not necessarily reflect the views of LTS. For more information on terms of use, please contact [marketing@LTSecurityinc.com](mailto:marketing@LTSecurityinc.com)*



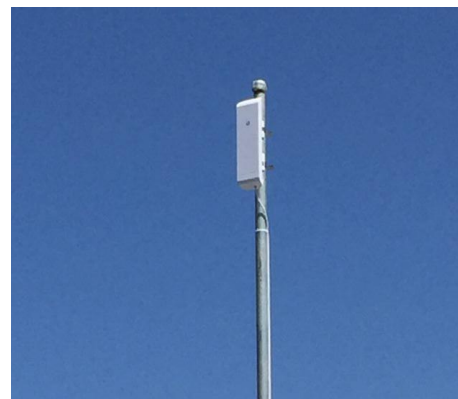
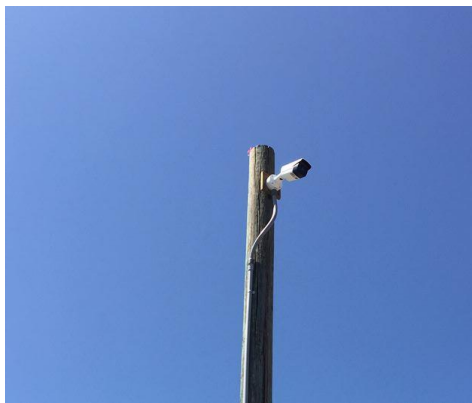
Video Solutions for Security Professionals™

## CASE STUDY



### Results

Both the security professional and management at C & M Mini Storage were very impressed with the results as the system used both cable and wireless solutions to surveil the entire property without any problems. Utilizing wireless solutions for part the project kept costs down. Storage management feels more confident in its surveillance system now that upgrade from an analog system to a high-resolution IP network system.



marketing@LTSecurityinc.com | LTSecurityinc.com

*Disclaimer: The information contained in this case study is to be used only as a case study reference for learning material purposes. Optional formulated by author are intended to protect companies and its names and does not necessarily reflect the views of LTS. For more information on terms of use, please contact [marketing@LTSecurityinc.com](mailto:marketing@LTSecurityinc.com)*